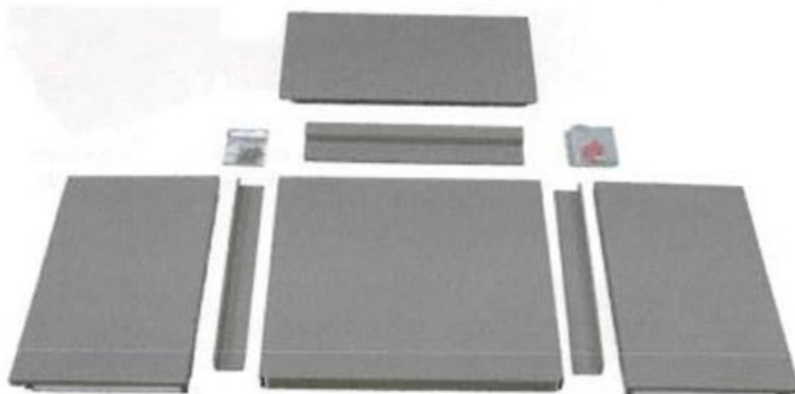
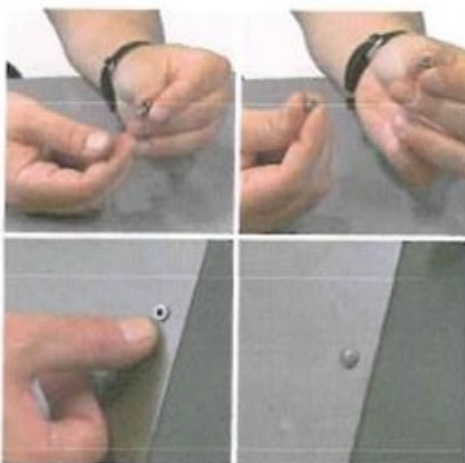


Large Aluminium Outside Cabinet Assembly Instructions

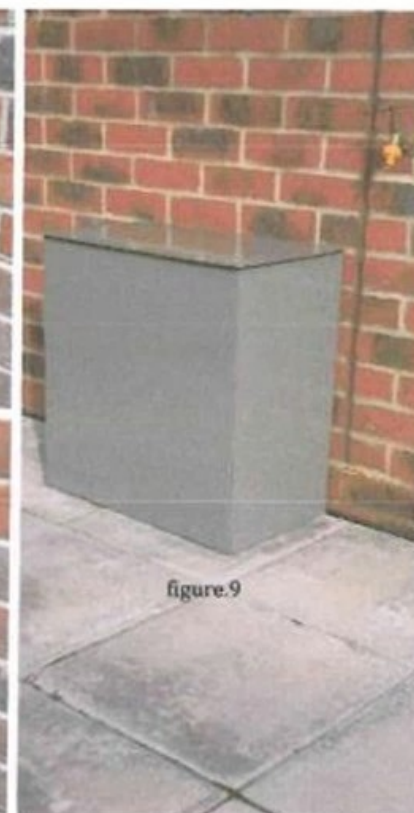


Parts list

- 1 x Pre-drilled Front - 1 x Pre-drilled Top
- 2 x Pre-drilled Sides
- 1 x Horizontal Wall Bracket - 2 x Vertical Wall Brackets
- 20 x Push Rivets - 10 x 1½" No.8 Screws - 10 x Wall Plugs



Note: If the holes are lined up perfectly these two part push rivets should simply locate and push tight. If you find that you are having trouble locating the rivet, separate the rivet from the cup, place the cup into the hole until flush and then push home the rivet as shown above.



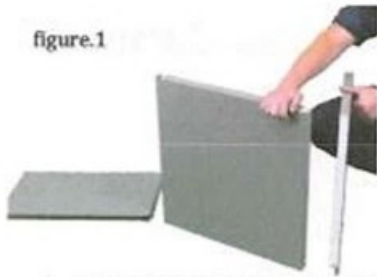
7. Mark your softener position, centre the Horizontal bracket and fix to the wall, level at a height of 510mm to the bottom edge (figure.7). We recommend at least 3 screws to fix well.

8. Next fix the vertical brackets to the wall, level, fixings out, close to each end of the horizontal bracket but the inside edges no more than 495mm apart (figure.8). We recommend at least 2 screws in each.

9. Replace and hook up the softener and hang the completed cabinet in position. (figure.9)

Note: The cabinet sides and Vertical Brackets can be cut out easily to allow for pipe runs using a hacksaw or jigsaw with a metal cutting blade but we recommend this is done prior to full assembly to avoid damage.

figure.1



1. Locate the front and one side with the pre-drilled holes facing the top.

figure.2



2. Push front and side together and secure using one rivet in the centre hole.



figure.3

3. Secure the other side, again using only one rivet in the centre.



figure.4

4. Place the top on and secure with the front and side centre holes.



figure.5

5. Once loosely together then alternately fix the remaining rivets.

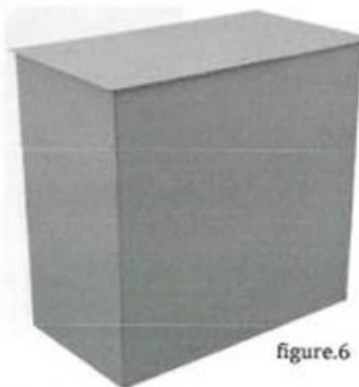


figure.6

6. Voila!!! Ready to fit.